

YOUR PERFECT SKIN CARE ROUTINE

transform your skin...



Jan
MARINI
SKIN RESEARCH®

ASK YOURSELF THE FOLLOWING QUESTIONS:

- 1 -

If there was something you could change or improve about your skin, what would it be?

- 2 -

What else would you like to change or improve?

- 3 -

Based on your concerns, how important is it to you to achieve results?



DETERMINE YOUR PERFECT SOLUTION

GOOD

For those seeking a targeted solution for their primary concern, we recommend a Targeted Accelerator.

Includes:

- RETINOL, PEPTIDES & ANTIOXIDANTS
- VITAMIN C & BROAD-SPECTRUM SPF
- ADVANCED RESURFACING, GROWTH FACTORS, PEPTIDES, HYDRATORS AND SOOTHING EXTRACTS

BETTER

For those who wish to enhance their results while protecting their skin into the future, we recommend a Targeted Accelerator plus Rejuvenate & Protect.

Includes:

- RETINOL, PEPTIDES & ANTIOXIDANTS
- VITAMIN C & BROAD-SPECTRUM SPF
- ADVANCED RESURFACING, GROWTH FACTORS, PEPTIDES, HYDRATORS AND SOOTHING EXTRACTS

BEST

For the most rapid and comprehensive results for both their primary concern and overall skin quality, we recommend a Targeted Accelerator plus the most awarded NewBeauty® Award-Winning Skin Care Management System™.

Includes:

- RETINOL, PEPTIDES & ANTIOXIDANTS
- VITAMIN C & BROAD-SPECTRUM SPF
- ADVANCED RESURFACING, GROWTH FACTORS, PEPTIDES, HYDRATORS AND SOOTHING EXTRACTS

Pair Your Perfect Skincare Routine Solution with every office treatment!

FINE LINES & WRINKLES

Results achieved using
Skin Care Management System™ + Age Intervention® Retinol Plus



BASELINE



4 MONTHS



BASELINE



3 MONTHS

YOUR PERFECT SOLUTION

GOOD



Age Intervention® Retinol Plus

Featured on the **Today Show** and awarded “Best Retinol Cream” two times by **NewBeauty Magazine!**

Age Intervention Retinol Plus combines concentrated retinol, peptides and antioxidants to improve texture and reduce the appearance of fine lines and wrinkles!

Includes:

- RETINOL, PEPTIDES AND ANTIOXIDANTS
- VITAMIN C AND BROAD-SPECTRUM SPF
- ADVANCED RESURFACING, GROWTH FACTORS, PEPTIDES, HYDRATORS AND SOOTHING EXTRACTS

BETTER



Rejuvenate & Protect + Age Intervention® Retinol Plus

Pair Age Intervention Retinol Plus with Rejuvenate & Protect for enhanced improvement in the appearance of fine lines and wrinkles while simultaneously helping protect your skin now and into the future!

Includes:

- RETINOL, PEPTIDES AND ANTIOXIDANTS
- VITAMIN C AND BROAD-SPECTRUM SPF
- ADVANCED RESURFACING, GROWTH FACTORS, PEPTIDES, HYDRATORS AND SOOTHING EXTRACTS

BEST



Skin Care Management System™ + Age Intervention® Retinol Plus

Combine Age Intervention Retinol Plus with the Skin Care Management System for ultimate results! The most awarded Best Skin Care System provides everything you need from cleanser to sunscreen to reduce the appearance of fine lines and wrinkles.

Includes:

- RETINOL, PEPTIDES AND ANTIOXIDANTS
- VITAMIN C AND BROAD-SPECTRUM SPF
- ADVANCED RESURFACING, GROWTH FACTORS, PEPTIDES, HYDRATORS AND SOOTHING EXTRACTS

PIGMENTATION

Results achieved using
Skin Care Management System™ + Marini Luminate® Face Lotion MD



BASELINE



2 MONTHS

Results achieved using
Skin Care Management System™ + Marini Luminate® Face Lotion



BASELINE



4 MONTHS

YOUR PERFECT SOLUTION

GOOD



Marini Luminate® Face Lotion

Study published in the Journal of Drugs and Dermatology! This advanced non-hydroquinone solution outperformed the gold-standard to reduce the appearance of discoloration while simultaneously reducing the appearance of fine lines and wrinkles!

Includes:

- MULTIPLE BRIGHTENING INGREDIENTS, RETINOL AND TURMERIC EXTRACT
- VITAMIN C AND BROAD-SPECTRUM SPF
- ADVANCED RESURFACING, GROWTH FACTORS, PEPTIDES, HYDRATORS AND SOOTHING EXTRACTS

BETTER



Rejuvenate & Protect + Marini Luminate® Face Lotion

Pair Marini Luminate Face Lotion with Rejuvenate and Protect to further brighten your complexion while protecting your skin now and into the future!

Includes:

- MULTIPLE BRIGHTENING INGREDIENTS, RETINOL AND TURMERIC EXTRACT
- VITAMIN C AND BROAD-SPECTRUM SPF
- ADVANCED RESURFACING, GROWTH FACTORS, PEPTIDES, HYDRATORS AND SOOTHING EXTRACTS

BEST



Skin Care Management System™ + Marini Luminate® Face Lotion

Combine Marini Luminate Face Lotion with the Skin Care Management System for ultimate results! The most awarded Skin Care System provides everything you need from cleanser to sunscreen to smooth the skin and reduce the appearance of discoloration for a more even, youthful complexion.

Includes:

- MULTIPLE BRIGHTENING INGREDIENTS, RETINOL AND TURMERIC EXTRACT
- VITAMIN C AND BROAD-SPECTRUM SPF
- ADVANCED RESURFACING, GROWTH FACTORS, PEPTIDES, HYDRATORS AND SOOTHING EXTRACTS

YOUR PERFECT SOLUTION FOR ACNE

GOOD



Age Intervention® Retinol Plus

Duality utilizes multiple proven acne fighting technologies to deliver serious adult acne control while simultaneously improving skin quality and reducing the appearance of fine lines and wrinkles.

Includes:

- ULTRA-MICRONIZED BENZOYL PEROXIDE, RETINOL & GREEN TEA EXTRACT
- VITAMIN C AND BROAD-SPECTRUM SPF
- ADVANCED RESURFACING, GROWTH FACTORS, PEPTIDES, HYDRATORS AND SOOTHING EXTRACTS

BETTER



Rejuvenate & Protect + Age Intervention® Retinol Plus

Pair Age Intervention Retinol Plus with Rejuvenate and Protect to address adult female acne while simultaneously brightening your complexion and protecting your skin now and into the future!

Includes:

- ULTRA-MICRONIZED BENZOYL PEROXIDE, RETINOL & GREEN TEA EXTRACT
- VITAMIN C AND BROAD-SPECTRUM SPF
- ADVANCED RESURFACING, GROWTH FACTORS, PEPTIDES, HYDRATORS AND SOOTHING EXTRACTS

BEST



Skin Care Management System™ + Age Intervention® Retinol Plus

Combine Age Intervention Retinol Plus with the Skin Care Management System for ultimate results! The most awarded Skin Care System provides everything you need from cleanser to sunscreen to exfoliate and clear pores. Proven in an independent dermatologist study to significantly improve adult female acne!

Includes:

- ULTRA-MICRONIZED BENZOYL PEROXIDE, RETINOL & GREEN TEA EXTRACT
- VITAMIN C AND BROAD-SPECTRUM SPF
- ADVANCED RESURFACING, GROWTH FACTORS, PEPTIDES, HYDRATORS AND SOOTHING EXTRACTS

VOLUME & LAXITY

Results achieved using
Skin Care Management System™ + Hyla3D™ Face Serum
Hyaluronic Acid Complex



BASELINE



1 MONTH

YOUR PERFECT SOLUTION

GOOD



Hyla3D™ Face Serum or Hyla3D™ Face Cream Hyaluronic Acid Complex

Hyaluronic acid is an essential building block in the skin. Take a 3-dimensional approach to restoring the skin's youthful hydration and volume! Multiple advanced forms of Hyaluronic Acid (HA) are combined with HA enhancing and boosting ingredients for a more youthful, contoured look.

Includes:

- MULTIPLE FORMS OF HYALURONIC ACID AND HA BOOSTING INGREDIENTS
- VITAMIN C AND BROAD-SPECTRUM SPF
- ADVANCED RESURFACING, GROWTH FACTORS, PEPTIDES, HYDRATORS AND SOOTHING EXTRACTS

BETTER



Rejuvenate & Protect + Hyla3D™ Face Serum or Hyla3D™ Face Cream Hyaluronic Acid Complex

Pair Hyla3D Face Serum with Rejuvenate and Protect to help lift, firm and tone while protecting your skin now and into the future!

Includes:

- MULTIPLE FORMS OF HYALURONIC ACID AND HA BOOSTING INGREDIENTS
- VITAMIN C AND BROAD-SPECTRUM SPF
- ADVANCED RESURFACING, GROWTH FACTORS, PEPTIDES, HYDRATORS AND SOOTHING EXTRACTS

BEST



Skin Care Management System™ + Hyla3D™ Face Serum or Hyla3D™ Face Cream Hyaluronic Acid Complex

Combine Hyla3D Face Serum with the Skin Care Management System for ultimate results! The most awarded Skin Care System provides everything you need from cleanser to sunscreen to hydrate, smooth and enhance the skin for more youthful looking volume and contour.

Includes:

- MULTIPLE FORMS OF HYALURONIC ACID AND HA BOOSTING INGREDIENTS
- VITAMIN C AND BROAD-SPECTRUM SPF
- ADVANCED RESURFACING, GROWTH FACTORS, PEPTIDES, HYDRATORS AND SOOTHING EXTRACTS

REDNESS

Results achieved using
Skin Care Management System™ + RosaLieve® Redness Reducing Complex



BASELINE



1 MONTH



BASELINE



8 MONTHS

YOUR PERFECT SOLUTION

GOOD



RosaLieve® Redness Reducing Complex

RosaLieve Redness Reducing Complex is an innovative formula with azelaic acid, an anti-redness peptide and multiple antioxidants and extracts shown to reduce the appearance of redness and visible flushing.

Includes:

- ANTI-REDNESS PEPTIDE, AZELAIC ACID AND TEA EXTRACTS
- VITAMIN C AND BROAD-SPECTRUM SPF
- ADVANCED RESURFACING, GROWTH FACTORS, PEPTIDES, HYDRATORS AND SOOTHING EXTRACTS

BETTER



Rejuvenate & Protect + RosaLieve® Redness Reducing Complex

Pair RosaLieve Redness Reducing Complex with Rejuvenate and Protect to reduce redness while simultaneously brightening your complexion and protecting your skin now and into the future.

Includes:

- ANTI-REDNESS PEPTIDE, AZELAIC ACID AND TEA EXTRACTS
- VITAMIN C AND BROAD-SPECTRUM SPF
- ADVANCED RESURFACING, GROWTH FACTORS, PEPTIDES, HYDRATORS AND SOOTHING EXTRACTS

BEST



Skin Care Management System™ + RosaLieve® Redness Reducing Complex

Combine RosaLieve Redness Reducing Complex with the Skin Care Management System for ultimate results! The 11-time-consecutive Best Skin Care System provides everything you need from cleanser to sunscreen to soothe the skin, improve uniformity and reduce the appearance of redness; making every day as good as your best days before!

Includes:

- ANTI-REDNESS PEPTIDE, AZELAIC ACID AND TEA EXTRACTS
- VITAMIN C AND BROAD-SPECTRUM SPF
- ADVANCED RESURFACING, GROWTH FACTORS, PEPTIDES, HYDRATORS AND SOOTHING EXTRACTS

NECK

Results achieved using **Marini Juvenileck** Neck Cream



BASELINE



6 MONTHS

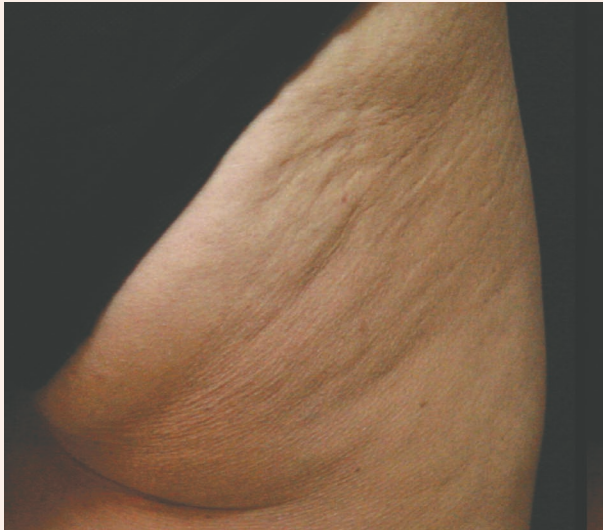


Marini Juvenileck Neck Cream

A revolutionary neck product featuring rye & oat extracts, glaucine, aminophylline, DMAE and peptides, shown in the *Journal of Drugs & Dermatology* to significantly improve hydration and the appearance of texture, wrinkles, and laxity.

BODY

Results achieved using **Marini CelluliTx** Cellulite Cream



BASELINE



1 MONTH



BASELINE



2 MONTHS



Marini CelluliTx Cellulite Cream

A breakthrough solution for those seeking to combat the appearance of cellulite.

HANDS



BASELINE



4 MONTHS

Results achieved using: **Marini ReNu** Corrective Hand Complex plus Jan Marini Skin Research Professional Glycolic Resurfacing



Marini ReNu Corrective Hand Complex

Patent-pending formulation takes a multi-dimensional approach to targeting visible signs of aging on the hands.

EYES



Transformation® Eye Cream

Patented Thymosin beta 4, TGF beta 1, peptides and hyaluronic acid to visibly improve texture and restore hydration around the eyes.



Age Intervention® Eye Cream

Peptides, retinol and hyaluronic acid dramatically reduce the appearance of wrinkles around the eye for an ultra-smooth contour.

LIPS AND HANDS



Hyla3D™ HA Lip Complex

Advanced hyaluronic acid, peptides, and retinol help to increase lip hydration, soften the appearance of upper lip lines and enhance definition.



Marini ReNu Corrective Hand Complex

Marini ReNu is an exciting new patent-pending, multi-functional hand solution to brighten overall skin tone and decrease the appearance of texture, discoloration and fine lines and wrinkles on the hands!

CORRECTIVE MASKS



Clean Zyme® Face Cleanser & **Skin Zyme®** Face Mask

Proteolytic enzymes gently resurface to reveal healthy, smooth and polished skin.



Retinol Plus Mask

Retinol, peptides, antioxidants, and soothing agents help reduce the appearance of fine lines and wrinkles, sun damage, and hyperpigmentation for visibly smoother more radiant looking skin.



Marini Luminate® Face Mask

Advanced brightening agents, targeted acids and antioxidants visibly brighten and gently exfoliate for smooth, healthy, glowing skin.

#1 SKIN CARE
SOLUTION IN THE NATION



cleverbeauty.com | info@cleverbeauty.com

  @janmariniskin

*Massage Envy SPE Franchising, LLC is a national franchisor of independently owned and operated franchised locations. Each location is independently owned and operated. All statements, claims and information provided in this material is the direct representation of Jan Marini Skin Research, Inc. ("Jan Marini"). For more information concerning any statement, claim, or information please directly reach out to Jan Marini. ©2019 ME SPE Franchising, LLC.